

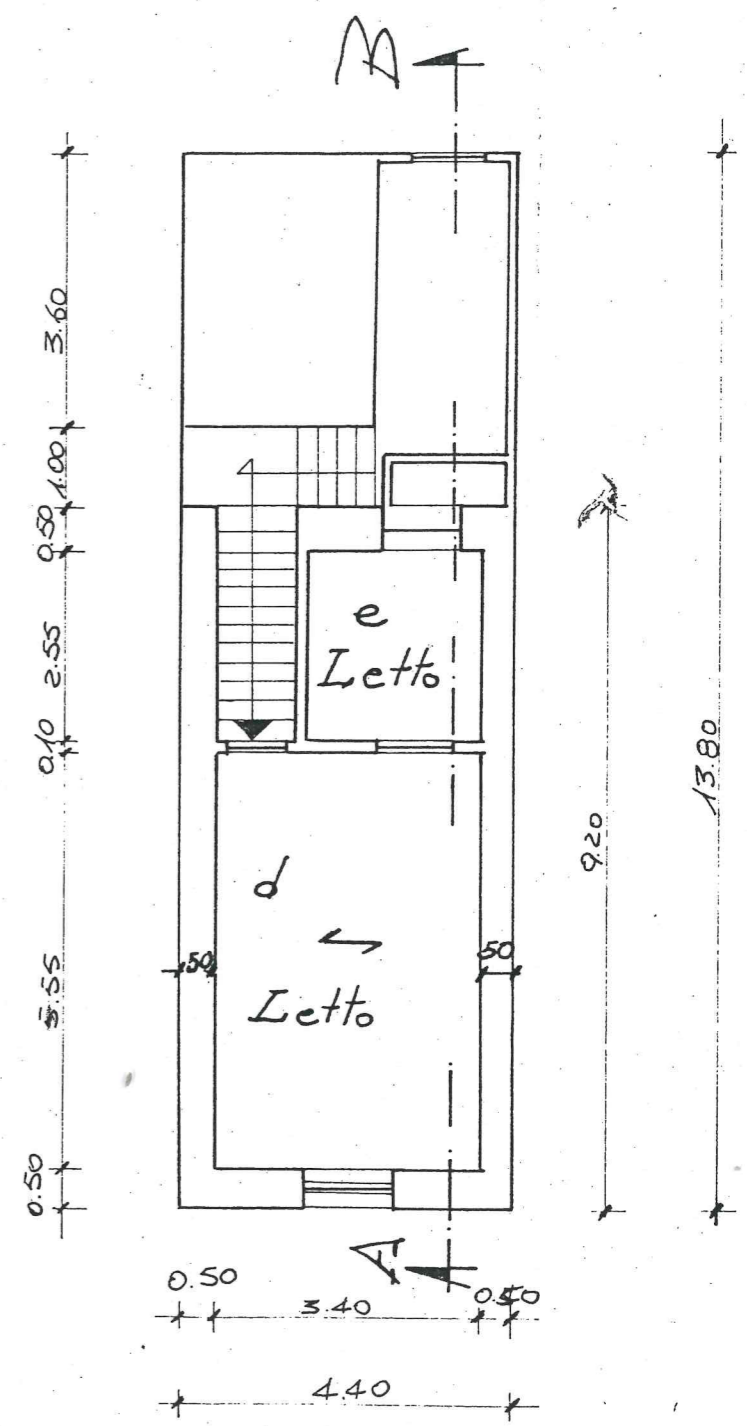
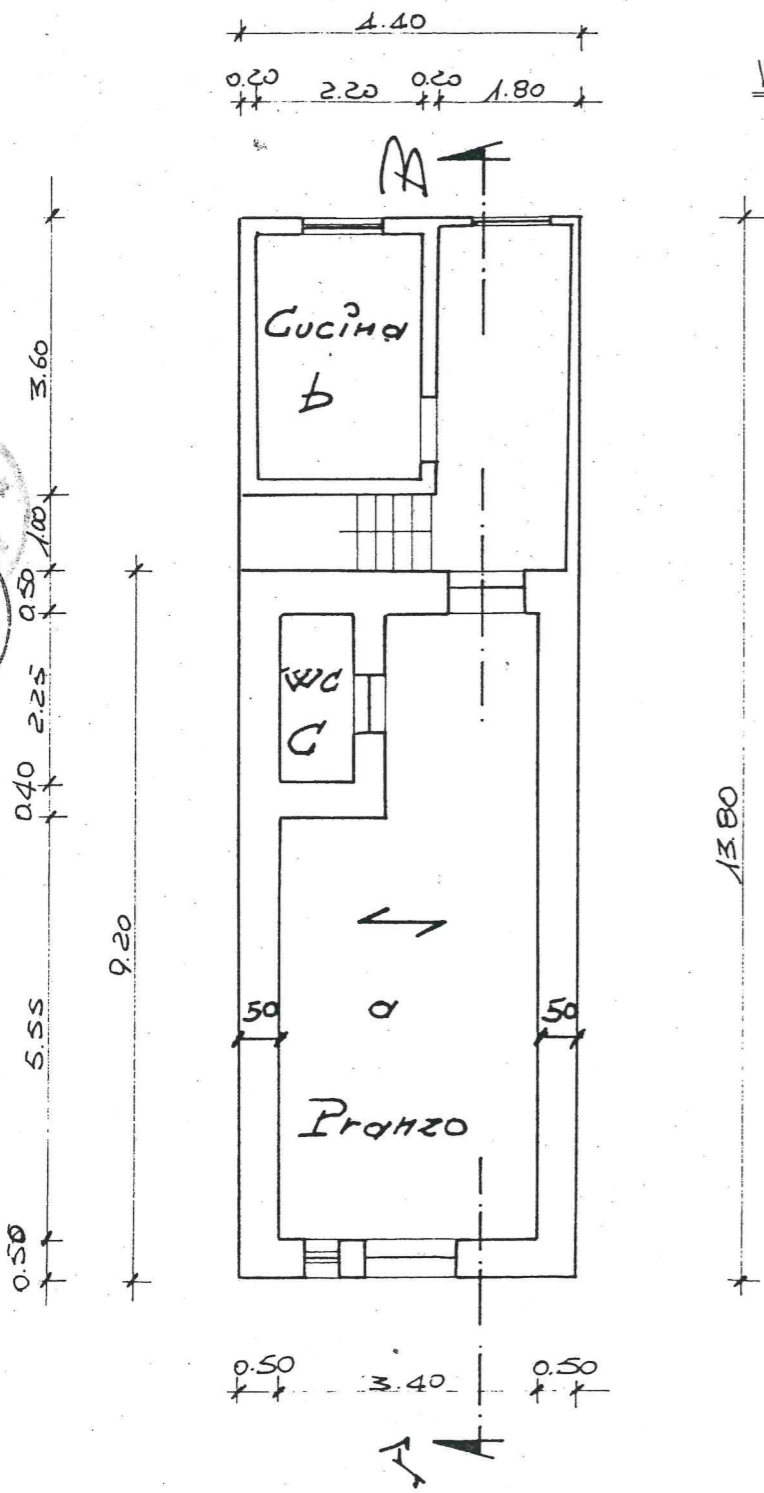
PIANTA PIANO TERRA

PIANTA 1° PIANO

Via Molino Vecchio

- d: $5.55 \times 3.40 = 18.87 \text{ mq}$
- : $2.00 \times 2.65 = 5.30 \text{ mq}$
- b: $2.20 \times 3.20 = 7.04 \text{ mq}$
- c: $2.25 \times 1.00 = 2.25 \text{ mq}$
- d: $5.55 \times 3.40 = 18.87 \text{ mq}$
- c: $2.40 \times 2.55 = 6.12 \text{ mq}$
- S_u = 58.45 mq**

- Balcone: $0.70 \times 1.80 = 1.26 \text{ mq}$
- Scala : $1.00 \times 3.15 = 3.15 \text{ mq}$
- : $1.00 \times 2.50 = 2.50 \text{ mq}$
- S_{nt} = 6.91 mq**



Via Garibaldi

