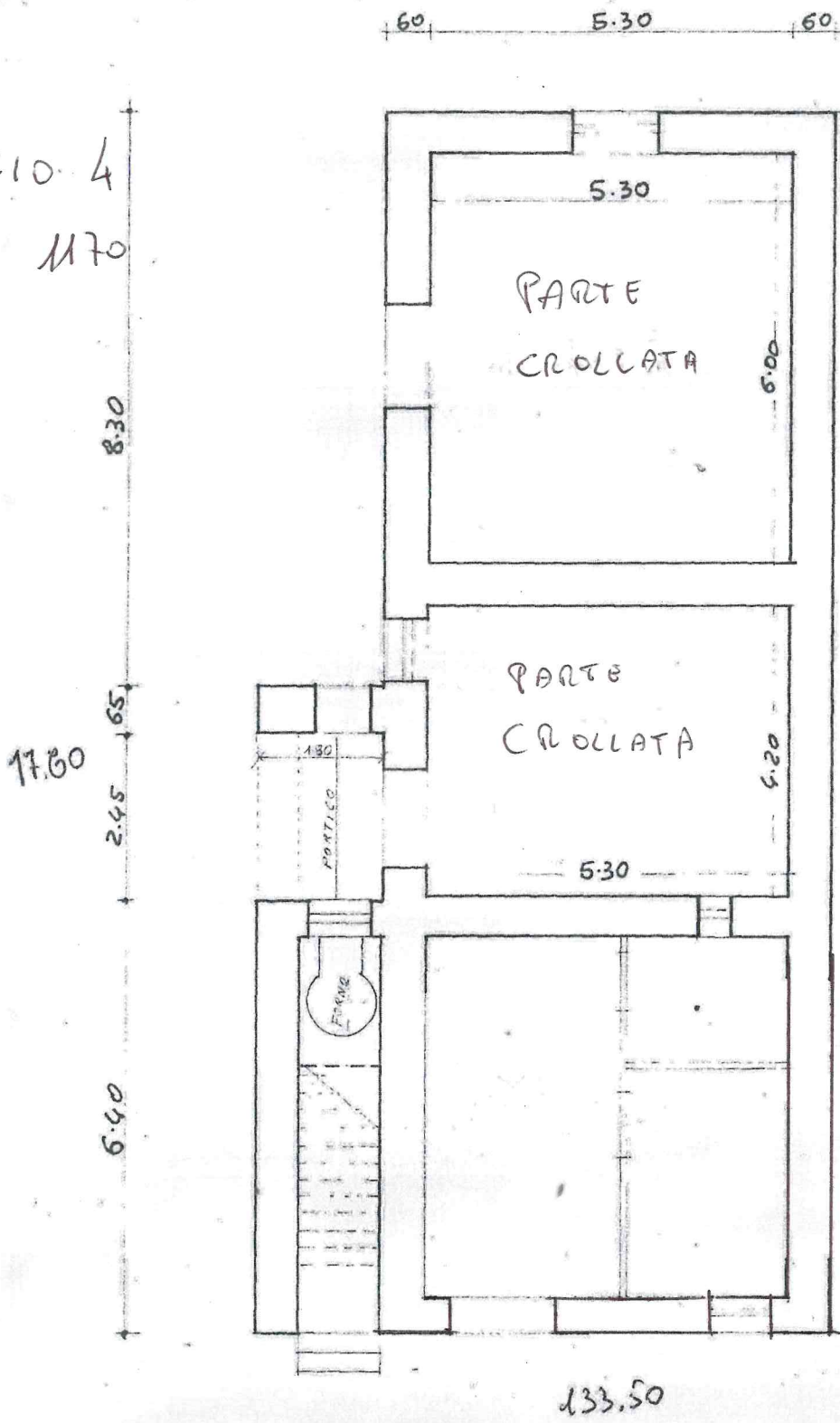


DISEGNI DEL PREEISTENTE

PIANTA PIANO TERRA

Foglio 4
P.LLA M70

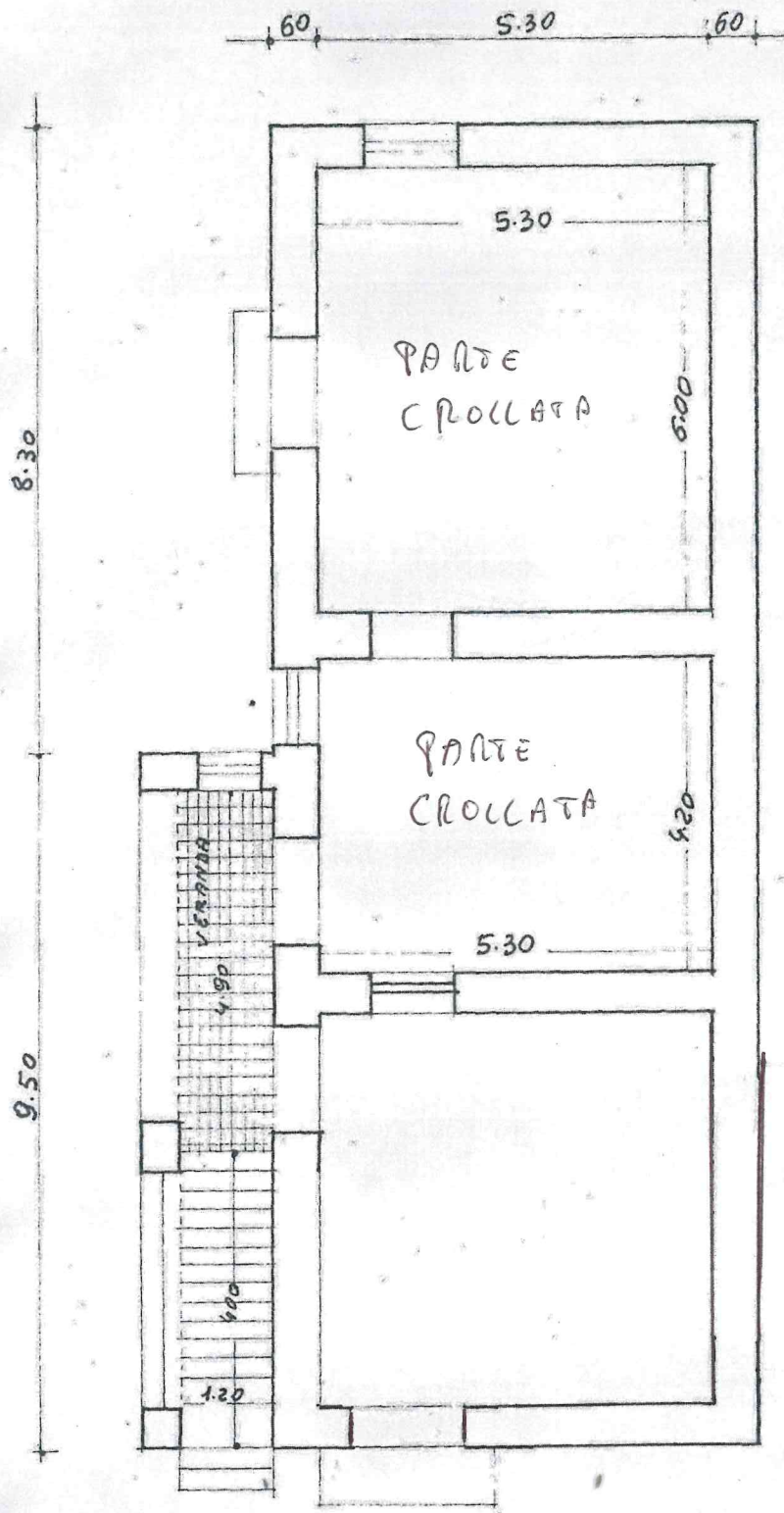


SUPERF. UTILE

- | | | |
|--------------------|-----|-------|
| 1) - 5.30 x 6.00 = | Hq. | 31.80 |
| 2) - 5.30 x 4.20 = | | 22.26 |
| 3) - 5.30 x 6.00 = | | 31.80 |
| 4) - 5.30 x 4.20 = | | 22.26 |

Mq. 108.12

PiANTA PRIMO PIANO



Foglio 4
P.LLA 1170

SUPERFICI NON RESID.	
PORTICO -	1.80 X 2.45 = Mg. 4.41
VERANDA -	4.90 X 1.20 = 5.88
SCALA -	1.20 X 4.00 = 4.80
BALCONE -	0.60 X 2.20 = 1.32
Mg. 16.41	